



National Trust for Historic Preservation

National Trust Tours

# Wonders of the Galápagos Islands

VOYAGE OF DISCOVERY



January 28 to February 6, 2026

**V**enture to the far side of the world to immerse yourself in historic Quito, Ecuador, and the otherworldly Galápagos landscapes that inspired Charles Darwin on a once-in-a-lifetime 10-day land and cruise adventure. Spend two nights in historic Quito, Ecuador, where you'll straddle two hemispheres at the Middle of the Earth. Then, embark on an expedition to six unique and diverse volcanic islands in the mythical Galápagos archipelago — North Seymour, Isabela, Fernandina, Rabida, Santa Cruz and Floreana islands. Traverse lava fields and pristine beaches with experienced naturalists to encounter the extraordinary array of plant and animal life, some that exist nowhere else on Earth. Snorkel or ride in glass-bottom boats amid turquoise waters, marveling at exotic marine life such as graceful Manta rays, robust coral reefs and giant sea turtles. Each day reveals incredible wonders as you look for sightings of endemic species, including Blue-footed boobies, sea-swimming marine iguanas, Flightless cormorants and Darwin's finches.

### Exclusive Highlights

- An intimate journey to the incomparable Galápagos Islands, including a 6-night cruise aboard *La Pinta*, an exclusively chartered, luxury expedition yacht.
- Explore Quito, Ecuador during a 2-night stay.
- Join your expedition naturalists for excursions and destination-specific lectures on board.
- Two UNESCO World Heritage Sites.
- A specially arranged visit to the Charles Darwin Research Station to uncover the secrets of evolution.



**Above: Galápagos sea lion suns on the beach**

**Cover: Blue-footed booby**



National Trust for Historic Preservation

## National Trust Tours

### Dear National Trust Traveler:

Join us on this extraordinary 10-day land-cruise adventure through the remote Galápagos Islands, home to unique reptiles, birds, plants and aquatic life that exist nowhere else on the planet. Experienced naturalists will accompany you on this expedition style itinerary in UNESCO-inscribed Galápagos archipelago, highlighting two days in Quito, Ecuador, followed by a six-night cruise sailing round-trip from Baltra Island.

Witness geologic history unfold before your eyes on guided nature walks along volcanic island landscapes, each with its own ecosystem and teeming with endemic flora and fauna. You may see male Magnificent frigatebirds inflating their red throats, Darwin's finches and Nazca and Blue-footed boobies. The wildlife is uniquely receptive to up-close human interaction. Only here can you almost touch spiny-backed iguanas and snorkel alongside playful sea lions. You'll also experience the Charles Darwin Research Center during a specially arranged visit to learn about its conservation work and witness awe-inspiring Galápagos giant land tortoises and their babies.

Reserve your space today for the adventure of a lifetime!

Sincerely,

Meg Annacone-Poretz

Director, National Trust Tours



*Flightless cormorant searching for food underwater*

### Other opportunities to travel with National Trust Tours and Gohagan & Company:

The Luxurious Caribbean Sea  
Feb. 1 to 9, 2026

Passage from the Seychelles  
to Madagascar  
Feb. 24 to Mar. 9, 2026

For a full list of travel  
programs visit  
[www.nationaltrusttours.com](http://www.nationaltrusttours.com)

*The National Trust for Historic Preservation is a private, nonprofit membership organization dedicated to saving historic places and revitalizing America's communities.*

Learn more at  
[www.savingplaces.org](http://www.savingplaces.org)

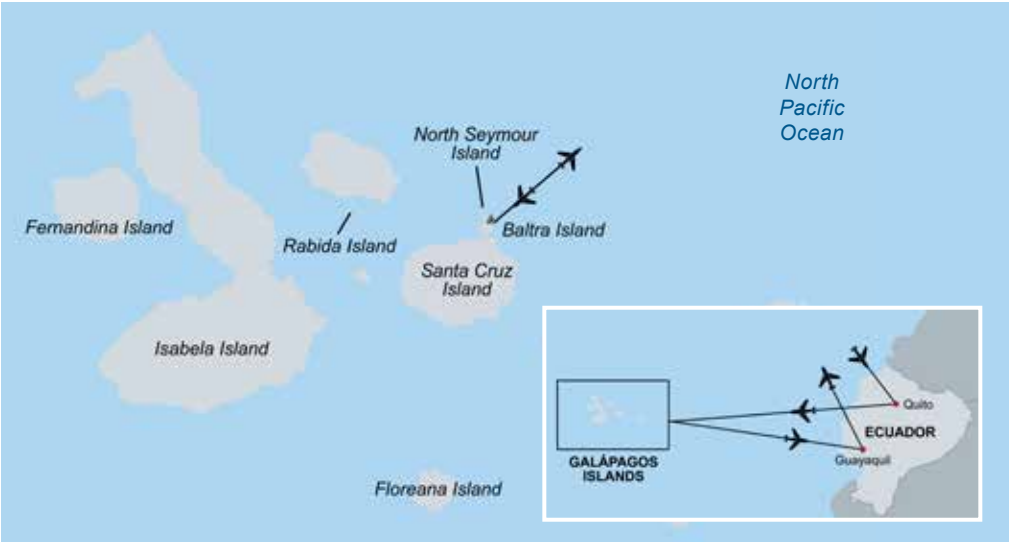
### Travel Insurance

USI Travel Insurance Services offers a plan designed specifically for National Trust Tours travelers, providing coverage for Trip Cancellation, Trip Interruption, Emergency Medical and more. You can upgrade your plan with Cancel For Any Reason (CFAR) coverage and be reimbursed up to 75% of your pre-paid, non-refundable trip costs. Purchase travel insurance today: 800-937-1387.

Find us on 

**To secure your spot, call National Trust Tours at (888) 484-8785  
or (202) 588-6300, or visit [www.nationaltrusttours.com](http://www.nationaltrusttours.com)**





**Note:** This day-by-day itinerary is for guidance only. Due to the variable weather conditions of the Pacific Ocean and wildlife viewing opportunities, excursion details and ports of call may change during this expedition-style program.

**Day 1 | Jan. 28**

Departure/Arrive Quito, Ecuador

Depart your home city, and arrive in Quito, Ecuador. Transfer to *Swissôtel Quito* and enjoy a day at leisure, with lunch and dinner on your own.

**Day 2 | Jan. 29** **B-L**

Quito

Begin with a walking tour of Quito, taking in the historic UNESCO-designated city center nestled high in the Andes. Visit the Middle of the World equatorial monument to straddle the equator and tour impressive exhibits within the on-site museum. Enjoy lunch at a local restaurant

**Day 3 | Jan. 30** **B-L-R-D**

Quito/Baltra Island, Galápagos/Embark/ North Seymour Island

Take an included flight to Baltra Island, Galápagos this morning. Arrive, transfer and

embark on *La Pinta* to begin your cruise. Savor lunch on board as we cruise to North Seymour Island. Disembark by dinghy for your first guided nature walk — be on the lookout for Magnificent and Great frigatebirds, land iguanas and the beloved Blue-footed boobies. Or, stay on the dinghy and sightsee from the coast. Later, mingle with a welcome cocktail followed by dinner on board.

**Day 4 | Jan. 31** **B-L-D**

Isabela Island/Fernandina Island

Start your day at Isabela to witness Punta Vicente Roca’s spectacular coastal scenery by panga boat. Admire the island’s dramatic geology and lush green vegetation from the turquoise water and be awed by the diverse gale of seabirds cascading above. Return to the yacht for lunch



*Galápagos sea lions*



as we cruise for Fernandina. Take a panga over to Punta Espinoza for a guided nature walk to see marine iguanas, brown pelicans and search for Galápagos penguins amid this barren landscape abundant with wildlife.

**Day 5 | Feb. 1**      **B-L-D**

Isabela Island

Arrive at Urbina Bay this morning for a guided nature walk on Isabela. Glimpse the geological history visible on land due to the dramatic uplift of the ocean floor and look for Darwin’s finches and Galápagos mockingbirds. Return to the ship and cruise

to the secluded Tagus Cove. Walk to Darwin Lake to admire views of the volcanic landscape. Opt to kayak or snorkel from the yacht, with a chance to swim with sea turtles and tropical fish.

**Day 6 | Feb. 2**      **B-L-D**

Rabida Island/Santa Cruz Island

Make a landing on Rabida Island’s red-colored beach where you can snorkel, swim or take a glass-bottom boat ride. You may see playful sea lions, Manta rays and unique starfish species. After lunch, sail to the north shore of Santa Cruz Island to explore Dragon Hill and see striking lagoon birds such as Great Blue and Lava herons.

**Day 7 | Feb. 3**      **B-L-D**

Santa Cruz Island

Disembark for Puerto Ayora to visit the Charles Darwin Research Station to learn about its conservation work, captive breeding program and marine and wildlife restoration efforts. Observe awe-inspiring giant tortoises and their babies. Continue to the highlands of Santa Cruz for lunch and a visit to the tortoise reserve. Watch giant Galápagos land tortoises up close within their natural habitat on a guided visit.

**Day 8 | Feb. 4**      **B-L-R-D**

Floreana Island

Take a panga ride through channels on Floreana’s north

*Male Magnificent frigatebird*



*Sally Lightfoot crab*







shore to Baroness Cove for a visit to the iconic Post Office Barrel. Continue with a visit to uninhabited Champion Islet, known for its vibrant marine life visible through crystal clear waters. Explore this pristine environment through a glass-bottom boat ride, or choose to snorkel in one of the Galápagos' best snorkeling locations. In Punta Cormorant, walk along the olivine-crystal beaches and

search for flamingos feeding in a brackish water lagoon. Continue across the island to see white-sand beaches that green sea turtles lay eggs on during their nesting season.

#### Day 9 | Feb. 5

**B**

Disembark/Baltra Island/  
Guayaquil

After breakfast, disembark the yacht for your included flight to Guayaquil. Transfer and check in to the *Hilton Colon Guayaquil Hotel*.

#### Day 10 | Feb. 6

**B**

Guayaquil/Depart for  
Home City

Check out of the hotel after breakfast and transfer to the airport for your return flight home.

*Note: This itinerary is subject to change due to local conditions.*

## The Incomparable Galápagos Islands

An astonishing vision of life without human presence, the Galápagos islands represent a pristine and extremely rare environment on our planet. Located 600 miles off the coast of Ecuador, the archipelago's isolation combined with the nutrient-rich waters of the Humboldt Current has created one of the world's richest marine ecosystems. Animal and bird life stranded on the barren volcanic landscapes had to adapt to the harsh conditions to survive — or perish. Four Galápagos islands served as a “living laboratory” for Charles Darwin's paradigm-shifting work during his 1835 voyage aboard the HMS Beagle. In 1859, the naturalist released his groundbreaking publication of “On the Origin of the Species,” one of history's most revolutionary and controversial scientific theories.

*Top to bottom: Galápagos tortoise, Marine iguana, Mangrove warbler*





## Swissôtel Quito

The upscale Swissôtel Quito is ideally located in the trendy Floresta district near the old town, with convenient access to restaurants, shopping, cultural attractions and nightlife. Spacious, contemporary guest rooms offer air conditioning and ensuite bathrooms. The hotel features two restaurants, a deli and a bar on site. Other amenities include the Amrita wellness area with spa treatments, a fitness center and an indoor/outdoor pool, whirlpool and sauna.



## Hilton Colon Guayaquil Hotel

The Hilton Colon Guayaquil offers accommodations just a short drive from the airport in downtown Guayaquil. Enjoy a choice of five on-site restaurants, bar and lounge areas and convenient access to nearby shopping. Amenities feature a wellness center and spa with a hot tub, sauna, steam bath and treatment rooms. Outside in the private wall-enclosed tropical outdoor courtyard, swim in the pool, relax under an umbrella or have a poolside cocktail.

## INCLUDED FEATURES

- Two nights in Quito, Ecuador, at the *Swissôtel Quito*.
- Six nights aboard the exclusively chartered, first-class *La Pinta*, sailing round-trip from Baltra Island
- One night in Guayaquil at the *Hilton Guayaquil Hotel*.
- Two included internal flights: from Quito to the Galápagos and from the Galápagos to Guayaquil.
- Transfers and luggage handling abroad when you purchase your air through Gohagan & Company and your arrival(s)/departure(s) coincide with the scheduled group transfer(s).
- Welcome Reception.
- Included Meals | 9 breakfasts, 7 lunches and 6 dinners.
- Experienced Gohagan & Company Travel Directors accompany you throughout the program.
- Acclaimed expedition naturalists enrich your experience with their knowledge and insight.
- During included excursions in Quito, our experienced, English-speaking local guides will teach you about the history, culture and natural splendor of the destination.
- Gratuities to local guides and drivers on included excursions and transfers.
- Complimentary water is available in your suite or stateroom and on excursions.
- Hospitality desk aboard the ship.
- Our extensive pre-departure materials better prepare you for your travel experience.
- Complimentary travel mementos.
- Automatic \$250,000 flight insurance policy for each participant ticketed on flights by Gohagan & Company.



**GOHAGAN  
& COMPANY**

---

## TERMS

**\*The Special Savings Rate is valid if booked by 08/14/25 and paid in full at booking.**

**These Special Savings consist of \$500 Early Booking and \$500 Pay-in-Full Savings.**

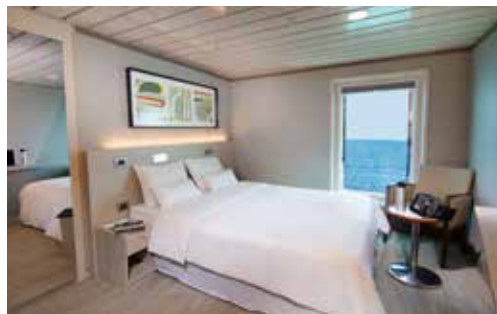
- All rates are in U.S. dollars, per person, based on double occupancy, including taxes.
- Single supplements apply in select categories at 160% of the per person cabin fare, plus taxes, with limited availability. Single rates for all other categories are at 200%. Special Savings still apply. (Cabin fare is the standard rate less taxes.)
- Deposit amount is \$1,500 per person. Final Payment is due at least 120 days prior to departure.
- Full ship information and deck plans are available on our website at [gohagantravel.com](http://gohagantravel.com).
- Gohagan & Company reserves the right to correct errors or omissions and to change any and all fares, fees, promotions and surcharges at any time. Terms & Conditions are available at [gohagantravel.com/terms/](http://gohagantravel.com/terms/)

Photo Credits: Adobe Stock, ©Hilton Colon Guayaquil, Minden Pictures, Shutterstock, ©Swissôtel Quito, ©Yacht La Pinta; all images are rights managed and cannot be used without permission.





*La Pinta* is designed to navigate the narrow channels, shallow bays and environmentally sensitive waters of the Galápagos Islands. Employing the latest in sustainable cruising technology to protect the archipelago's delicate ecosystem, the ship maintains the highest international safety standards. All luxury accommodations are ocean-view with a floor-to-ceiling window and air-conditioning. Included meals, featuring international and Ecuadorian specialties, are served in the ship's restaurant. Between excursions, guests may enjoy leisure time in the ship's bar, outdoor dining terrace, observation deck, natural history library with Wi-Fi access, fitness center, two hot tubs and two lounges.



## 2026 DEPARTURE DATE | Jan. 28-Feb. 6

Category	Description	Standard Rate	Special Savings Rate*
C	Stateroom with floor-to-ceiling windows; desk & chair; private bathroom. 163 sq ft   Middle Deck, fwd.	\$9,495	<b>\$8,495</b>
B	Stateroom with floor-to-ceiling windows; desk & chair; private bathroom. 175-210 sq ft   Middle Deck, mid.	\$11,995	<b>\$10,995</b>
A	Stateroom with floor-to-ceiling windows; sofa; desk & chair; private bathroom. 210-253 sq ft   Middle Deck, aft.	\$14,995	<b>\$13,995</b>

All suites and staterooms are ocean-view and feature: private bathroom; vertical rectangular windows; beds configured as two twins/one double; individually controlled air conditioning; in-room safe; complimentary reusable water bottles; luggage storage; hair dryer; spacious closet with hangers; desk and chair.

## The Gohagan Difference – An Inclusive Luxury Experience

For your comfort and convenience, our fares are comprehensive. We offer incredible inclusions not typical of all providers.

### Included in your Rate:

- Shore Excursions
- Wi-Fi/Internet
- Beverage Package
- Port Charges & Gratuities
- Travel Director(s)

**ALWAYS  
INCLUDED**

**To secure your spot, call National Trust Tours at (888) 484-8785 or (202) 588-6300, or visit [www.nationaltrusttours.com](http://www.nationaltrusttours.com)**

**SPECIAL SAVINGS\* AVAILABLE**  
**SAVE \$2000 PER COUPLE!**



National Trust for Historic Preservation  
**National Trust Tours**  
105 Loudoun St. SW  
Unit 1  
Leesburg, VA 20175  
888.484.8785  
[www.nationaltrusttours.com](http://www.nationaltrusttours.com)  
[info@nationaltrusttours.com](mailto:info@nationaltrusttours.com)  
Find us on 

099-069

PRSRT STD  
U.S. Postage  
PAID  
Gohagan &  
Company



*Galápagos sea lions*