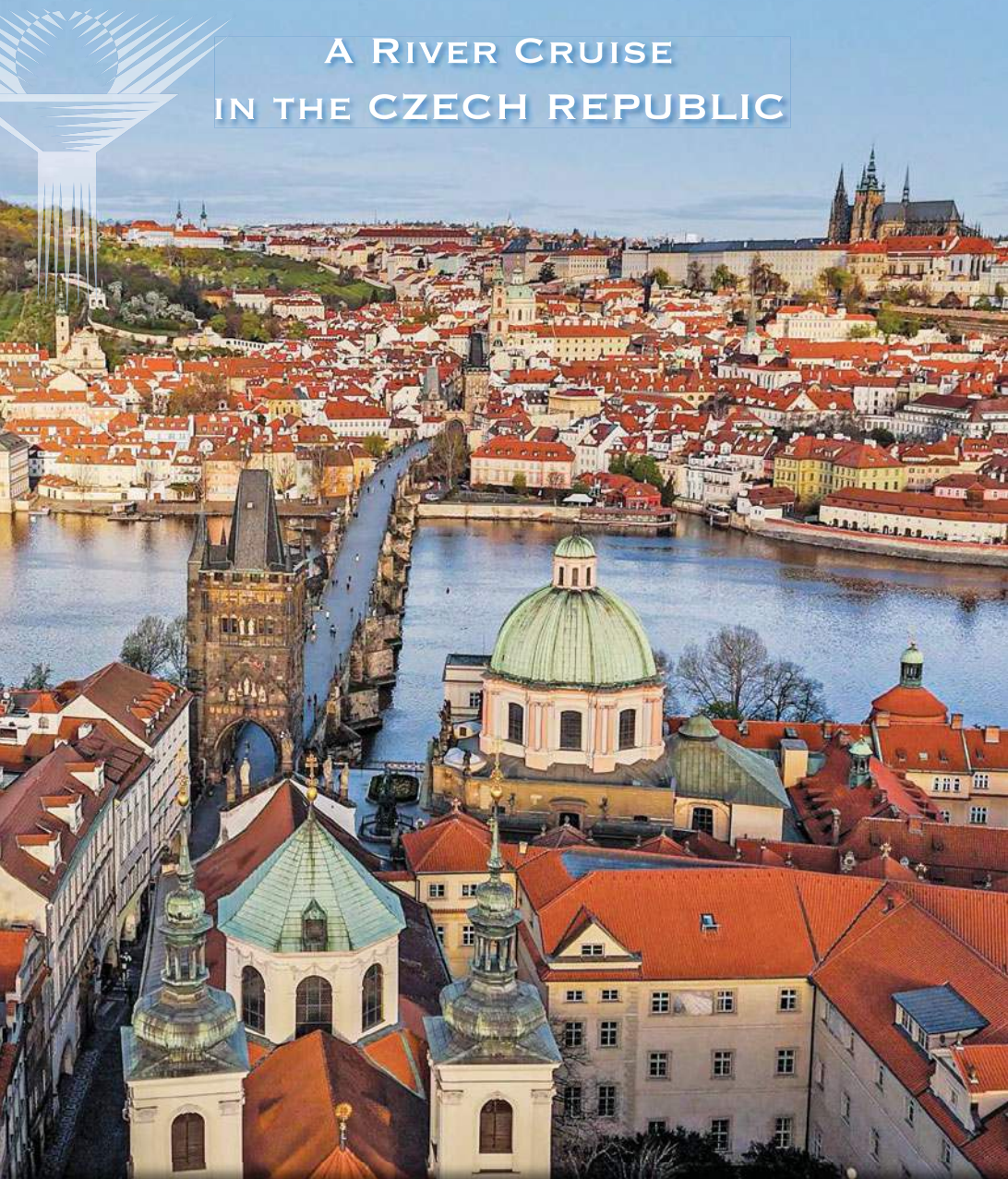


Bohemian Wonders

A RIVER CRUISE
IN THE CZECH REPUBLIC



SPONSORED BY



National Trust *for* Historic Preservation

National Trust Tours

October 7-16, 2026



National Trust *for* Historic Preservation

National Trust Tours

Dear National Trust Traveler,

Embark on a 10-day land and river cruise journey to discover centuries of history and culture in Prague, the Czech Republic and Germany. Enjoy first-class accommodations for two nights at a centrally located hotel in Prague, and six nights aboard your intimate, exclusively chartered river ship.

In the capital city of Prague, explore the baroque old town and the Old Jewish Quarter, tour the royal Prague Castle complex and choose from included excursions to Karlovy Vary or Český Krumlov. Cruise the romantic, picturesque Vltava River, stopping along the way to admire medieval weapons at the 13th-century Konopiště Castle, tour the noble, opulent Nelahozeves Castle and stroll through 10th-century Litoměřice, one of Bohemia's oldest cities. Cross into Germany to spend a day in Dresden. Behold the city's grandeur on panoramic and walking tours of the old town, its elegant boulevards and the royal district. Plus, you'll taste local wines and embrace Czechia's beer culture!

This exceptional program has been thoughtfully designed to include educational enrichment from expert guides and lecturers. Our Bohemian Wonders program is sure to be a crowd-pleaser. Guarantee your spot by making your reservation today!

Sincerely,

Meg Annacone-Poretz
Director, National Trust Tours

UNESCO World Heritage

1. Historic Centre of Prague
2. Historic Centre of Český Krumlov
3. Great Spa Towns of Europe: Karlovy Vary

Below: Mineral spring, Karlovy Vary



The National Trust for Historic Preservation is a private, nonprofit membership organization dedicated to saving historic places and revitalizing America's communities. For more information, visit the Trust's website at www.savingplaces.org.

National Trust Tours are open to members of the National Trust for Historic Preservation. The cost of a one-year membership is as follows: \$20 individual or \$30 family, and can be paid by credit card at the time of your registration or by check (membership checks should be sent to National Trust at 1155 15th Street, NW, Suite 300, Washington DC, 20005.)

USI Travel Insurance Services offers a plan designed specifically for National Trust Tours travelers, providing coverage for Trip Cancellation, Trip Interruption, Emergency Medical and more. You can upgrade your plan with Cancel For Any Reason (CFAR) coverage and be reimbursed up to 75% of your pre-paid, non-refundable trip costs. Purchase travel insurance today: 800-937-1387.



Discovery begins here



Immerse yourself in Bohemia's rich tapestry of beauty, history and culture on this enriching land and river journey! Begin in Prague and then cruise along Czechia's picturesque Vltava River to the confluence of the Elbe River. Stop in ports to explore legendary cities; linger inside noble Bohemian castles; behold Renaissance, Gothic, and baroque architectural gems; and discover Dresden's elegant grandeur. Plus, taste wines from a castle's vineyards and relish an immersive brewery visit and beer tasting!

Top: Konopiště Castle | Above: Czech wine and cheese
Cover: Prague | Mail panel: Prague Castle | Elbe Princesses
near Litoměřice

Inspiring Moments



- **Relish a two-night stay** in the heart of Prague and tour the baroque old town.
- **Cruise the Vltava River for six nights** along romantic Bohemian landscapes dotted with storybook castles and towns.
- Tour the 13th-century **Konopiště Castle**, once the Habsburgs' hunting lodge.
- Explore the **Prague Castle complex**, the 16th-century Golden Lane and St. Vitus Cathedral – its crown jewel.
- Discover Prague's historically significant Josefov, the **Old Jewish Quarter**.
- Behold lavish interiors within the noble, baroque-period **Nelahozeves Castle**.
- Immerse yourself in **Dresden's regal opulence** on a full-day city tour.
- Visit the **ancient royal city** of Litoměřice.
- Experience three **UNESCO World Heritage sites**.



Breathtaking Bohemian scenery along the Vltava River

Day 1 | In Transit

Depart your gateway city for Prague, Czech Republic. 🌐

Day 2 | Prague, Czech Republic

Arrive in Prague, transfer 🚗 and check in to the Art Deco Imperial Hotel.

This evening, mingle with your fellow travelers at a Welcome Reception with canapés.

Day 3 | Prague

Enrichment: *The Velvet Revolution.*

Prague's Old Town. Head out for a guided walk in the historic old town of this capital city. Stroll toward the Old Town Square, admiring the colorful baroque and Gothic architecture. Stop at the Astronomical Clock, the world's oldest working astronomical clock, installed in 1410, and a marvel of medieval craftsmanship. As the clock strikes the hour and a hush falls over the crowd, witness the delightful, reverent "Walk of the Apostles," a mesmerizing display of the clock's mechanics and harmonious blend of art, spiritual symbolism and storytelling.

Free Time: Enjoy the afternoon at your leisure.

Day 4 | Prague | Day 1 of Cruise

🌐PYJ | Choose one of these excursions:

• **Karlovy Vary Spa Town & Cable Car Ride.**

On a guided walk in the historic center of the renowned spa town, be awed by the Vřídlo Geyser, the town's largest hot mineral spring. Take a scenic funicular ride up to the Diana Observation Tower to behold panoramic views of the lush Tépła River valley and the luxurious Grandhotel Pup, circa 1701, in the distance.

• **Český Krumlov Walking Tour.** Stroll along cobblestone streets lined with cozy cafés and shops through the beautiful city center of this enchanting medieval town nestled along the Vltava River. Admire the Gothic, Renaissance and baroque architecture, such as the Plague Column and the town castle, dating to 1253.

Free Time: After both excursions, relish time at leisure to have lunch on your own and explore more of each captivating town.

This afternoon, transfer to the pier and embark the Elbe Princesse river ship.

Kick off the cruise at this evening's Welcome Reception, followed by dinner aboard the ship.

Day 5 | Prague | Štěchovice

Cruise the Vltava River. Admire the scenery as you glide past Bohemia's lovely, picturesque countryside and through the Slapy Dam.

Konopiště Castle. Disembark in Štěchovice to visit this 13th-century fortress, once the House of Habsburg's hunting lodge, and an example of French-influenced fortification architecture. Tour the castle's lavish interiors, brimming with elaborate tapestries and intricate woodwork. Witness the vast collection of medieval armor and weapons that once belonged to the late Archduke Franz Ferdinand of Austria.

Day 6 | Prague

Prague Castle. Travel back to Prague to relish a tour of its eponymous castle, the world's largest ancient castle complex. Be awed by the Castle Square gate and the Castle Gallery, and stroll down the 16th-century Golden Lane to see the colorful, charming cottages. Visit the



Old Royal Palace and St. Vitus Cathedral, the castle's crown jewel and once the coronation site for Czech kings and queens. Then, relax over lunch at a café on the castle grounds.

Historic Jewish Quarter. Set out on a guided walk to explore Josefov and gain insight into Prague's historic Jewish religious life. Visit the Prague National Jewish Museum, the Old-New Synagogue and the Old Jewish Cemetery, the world's oldest Jewish cemetery, with 12,000 tombstones, some dating to the 15th century. The ship remains in Prague overnight.

Day 7 | Kralupy

Head to the sundeck to enjoy a morning of scenic cruising toward Mělník, situated at the confluence of the Vltava and Elbe rivers.

Nelahozeves Castle. Discover the luxurious baroque-period lifestyle of a noble Bohemian family on a tour of this stunning Renaissance castle. Marvel at the rich private collection of furniture and paintings by Dutch masters. Enjoy a presentation of historical books and see an 8th-century Gospel manuscript. Visit

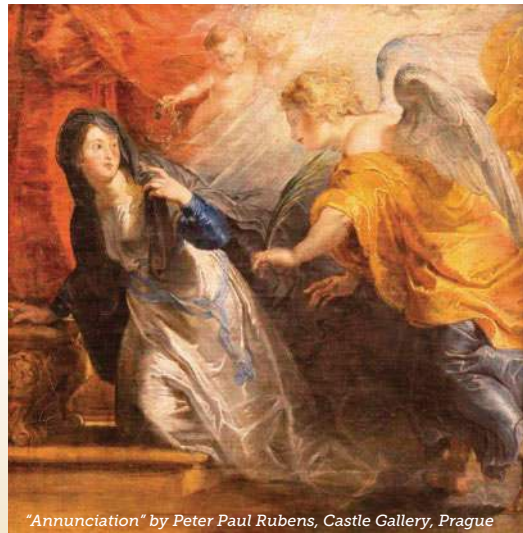


Nelahozeves Castle

composer Antonín Dvořák's birth house and savor a wine tasting on the castle grounds.

Day 8 | Mělník | Dresden, Germany

Dresden City Tour. Travel to Dresden for a panoramic motor coach and walking tour of the city's treasures. Marvel at castles across the Elbe River and the landmark Blue Wonder cantilever truss bridge. Drive through the posh Weisser Hirsch neighborhood, the Albertplatz public square and along King's Street in the elegant baroque quarter. Alight the coach at Theater Square in the old town and set out on a guided stroll of the historic royal district. See the Church of Our Lady, the Royal Castle and the Royal Catholic Cathedral; and behold the baroque Dresden Zwinger complex and the historic Taschenbergpalais Hotel. Then, visit either the Green Vault in the Royal Palace or the Old Masters Gallery in the Zwinger Palace.



"Annunciation" by Peter Paul Rubens, Castle Gallery, Prague



Free Time: Relish time at leisure for lunch on your own and further exploration of Dresden.

Day 9 | Litoměřice, Czech Republic

Litoměřice Guided Walk. Stroll through this hidden gem and one of Bohemia's oldest cities, which was built on the site of a Slavic fortress in the 10th century. Walk through the old town square and admire the Gothic Old Town Hall, the Romanesque St. Stephen's Cathedral and the baroque Bishop's Palace.

AHI Connects | Czech Brewery Visit & Tasting. Experience Czechia's beer culture during a visit to a local brewery. Learn about its brewing methods and savor tastings of the delicate, earthy and slightly bitter Czech beers. Enjoy an afternoon cruise back to Prague. Celebrate your Bohemian adventure at this evening's Farewell Reception and Dinner.

Day 10 | In Transit

After breakfast, transfer to the Prague airport for the return flight to your gateway city.

Note: Itinerary may change due to local conditions.

Flights and transfers included for AHI FlexAir participants.

PYJ experiences are included.

Activity Level

We have designated activity levels for all excursions on this program. For more details, please call or visit our website.

Excursions on this itinerary require:

- walking on cobblestones, unpaved paths and/or uneven surfaces
- getting on/off motor coaches and boats

Included Features



Accommodations (with baggage handling)

- **2 nights** in Prague, Czech Republic, at the first-class Art Deco Imperial Hotel.
- **6 nights** aboard the **exclusively chartered**, first-class Elbe Princesse.

Transfers (with baggage handling)

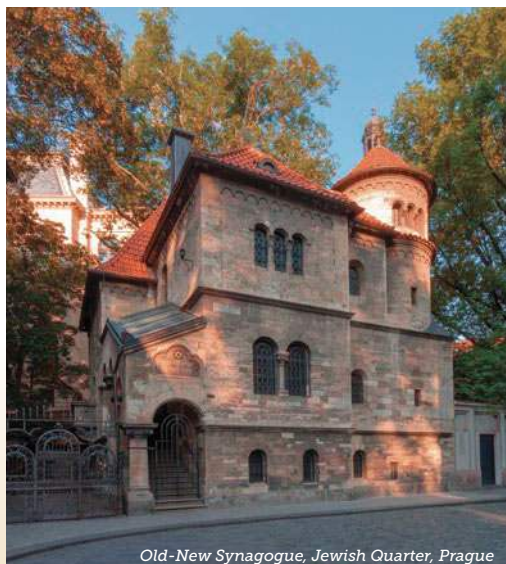
- Deluxe motor coach transfers during the Land Program.

Extensive Meal Program

- 8 breakfasts, 4 lunches and 6 dinners, including Welcome and Farewell Dinners; all drinks included on board except special wines and spirits.

Your One-of-a-Kind Journey

- **Enrichment by expert speakers** enhances your insight into the region.
- **Engaging excursions** showcase the local culture, heritage and history.
- **Personalize Your Journey | PYJ |** A choice of excursions in selected locales.
- **Free time** to pursue your individual interests.
- **AHI Connects:** Local immersion.
- Welcome and Farewell Receptions to mingle with fellow travelers.
- A personal VOX headset to hear your English-speaking guide clearly.
- Tipping of guides and drivers.
- Complimentary travel mementos.
- **AHI Sustainability Promise:** We strive to make a positive impact wherever we travel.



Old-New Synagogue, Jewish Quarter, Prague



Vineyards on the banks of the Elbe River



Medieval Astronomical Clock, Old Town Square, Prague



EXTEND YOUR STAY

Brandenburg Gate, Berlin



Berlin | 3 Nights

{ Elective POST-Trip Extension at an additional cost }

Explore Berlin during three additional nights at the first-class Hilton Berlin. This extension features a panoramic coach and walking tour of top sites, including the Brandenburg Gate, the famous Unter den Linden boulevard, numerous architectural jewels and the poignant Berlin Wall Memorial. Plus, chart your own itinerary around Berlin during a full day at leisure!

\$1,495 per person, double occupancy | \$1,990 single occupancy

2026 | Departure Details

Program Dates

Travel dates ✈ **October 7-16, 2026**

✈ Travel dates include any overnights required for international travel. These dates may vary depending on air schedules.

Tour dates* **October 8-16, 2026**

* Tour dates begin on the scheduled arrival date at your destination and end on the scheduled departure date from your destination.

Land | Cruise Program

Category-Deck	Full Price	Special Savings Price*
B-Main Deck	\$6,045	\$5,295
A-Upper	\$7,045	\$6,295

***This Special Savings Price includes our \$250 Early Booking and \$500 Pay-in-Full discounts and is valid if you book by the date on the address panel and pay in full at booking.**

Deposit amount is \$750 per person.

Final Payment is due at least 120 days prior to departure.

Upper deck category A features a French balcony with sliding-glass doors.

Main Deck category B has high-opening windows.

Price includes applicable program taxes (such as VAT and port charges).

All prices quoted are in USD, per person, based on double occupancy

and do not include air transportation costs (unless otherwise stated).

Special offers, promotions and discounts cannot be combined.

Single accommodations are an additional \$1,995 (limited availability).

Please note: Program-specific terms and conditions are available at <https://natrus.ahitravel.com/destinations/1971A?schoold=250>.

AHI FlexAir

Let us arrange your flights

Our experts are ready to assist you in booking flights. Our personalized air program offers the following advantages:

- **price guarantee** to protect you from fuel surcharge increases after ticket purchase
- arrival and departure **transfers** on group dates
- **flexibility** to change or cancel your reservation before departure on most flights (Fees may apply.)
- **assistance** in the event of schedule changes or delays

AHI Travel Expertise

Travel Consultants assist with the reservation process.

Travel & Air Coordinators offer their personalized assistance with flights, electives and special requests.

Travel Information provides pre-departure details and enrichment about your destination.

Your Travel Director, a seasoned, multilingual professional, manages daily logistics so you enjoy a seamless experience.

Handpicked Expert Guides and **Knowledgeable Lecturers** deepen your appreciation for the region and its history, culture and current events.



Elbe Princesse

The first-class MS Elbe Princesse shines among CroisiEurope's fleet of superior river ships, designed with a paddlewheel propulsion system able to navigate a river's more narrow and shallow passageways. Luxuriate in the ship's European style with a French flair and savor fine international cuisine as the staff and crew ensure you have a memorable cruise experience.



Art Deco Imperial Hotel | Prague



 TripAdvisor

Loschwitz Bridge, Dresden's "Blue Wonder"



Czechia's distinctive beer



Book your journey today!


800-323-7373

www.nationaltrusttours.com



National Trust for Historic Preservation
National Trust Tours

105 Loudoun Street, SW
 Unit 1
 Leesburg, VA 20175

Find us on 

BOHEMIA26 312



Discover enchanting Bohemian rivers, castles & cities!

Committed to connecting travelers
 to the people, places and cultures
 of the world for more than 62 years.



**Please call or refer to
 our website for the
 most current program
 information, discounts
 and pricing.**

Presorted Std.
 U.S. Postage
 Paid
 AHI Travel