



For questions or to reserve:
nationaltrusttours.orbridge.com
(866) 639-0079

Main Program: September 15, 2026 – September 24, 2026

Pre-Tour: September 13, 2026 – September 16, 2026

Post-Tour: September 24, 2026 – September 26, 2026

ITALIAN LAKES AND SWISS ALPS BY LUXURY TRAIN



Embark on a journey through the heart of Europe, where the boundless beauty of Italy and Switzerland unfolds before your eyes. This exclusive tour offers an exceptional blend of cultural richness and natural splendor, combining the allure of historic villages with the breathtaking grandeur of the Alps. From the tranquil shores of Lake Garda to the dramatic peaks of the Matterhorn, you'll experience a seamless fusion of adventure and relaxation. Whether it's savoring fine wines in a centuries-old vineyard or gliding through mountain landscapes aboard iconic trains, every moment of this Alpine rail odyssey is designed to leave you spellbound.

NOTE: Tour information is current as of 5/19/2025.

Program Highlights

- Begin your adventure with a breathtaking funicular ride to the summit of Mount Baldo—the cable car's rotating cabins offer 360° views of the stunning Dolomites. Enjoy a guided walk, picnic lunch and the option to hike back to the charming village of Malcesine for an immersive alpine experience.
- Explore the Renaissance-era streets of Trento's historic center on a guided tour, marveling at the architectural splendor of Piazza del Duomo and the majestic Cathedral of San Vigilio. Indulge in a winery visit where you'll sample the renowned Trento DOC sparkling wine during a delightful lunch.
- Embark on an awe-inspiring journey aboard the *Bernina Express*, the highest mountain railway in the Alps. From Tirano to Pontresina, admire unparalleled views of the Morteratsch Glacier and the dramatic ascent to Bernina Pass at 7,578 feet above sea level.

- Take a thrilling ride on the steep railway to Muottas Muragl peak and soak in the spectacular views over the Engadin Valley.
- Experience the traditional art of Alpine cheese-making at a local farm, and savor a delicious lunch of farm-fresh delicacies.
- Traverse the Swiss Alps on the legendary *Glacier Express*—crossing three high-mountain passes, 291 bridges and 91 tunnels—while enjoying a gourmet lunch on board as you make your way to the iconic Matterhorn.
- Ascend to one of the most breathtaking viewpoints in the Alps on the Gornergrat Bahn, the highest cogwheel railway in Europe. With the majestic Matterhorn as your backdrop, embark on a panoramic hike that promises stunning vistas and a serene encounter with the Swiss Alps.

What's Included

- 8 nights luxurious hotel accommodations in Lake Garda, Pontresina and Zermatt
- Comfortable seating and amenities while on board *Bernina Express* and *Glacier Express*
- 8 breakfasts, 5 lunches and 4 dinners including a special welcome dinner
- Private tours, admission, rail fares and special small-group excursions as noted in the 10-day itinerary
- Full guiding services of an Orbridge Travel Director and expert local guides
- Private motor coach transportation
- Luggage portage
- Gratuities to Orbridge Travel Director, local guides, drivers, porters, rail staff and wait staff for included meals
- Airport transfers for guests arriving and departing during the suggested times

Itinerary



B = Breakfast, L = Lunch, D = Dinner

Day 1: En Route from U.S.

Tuesday, September 15, 2026

Day 2: Arrive in Verona, Italy | Lake Garda

Wednesday, September 16, 2026 (D)

Upon arriving to Verona Airport an Orbridge representative will be waiting to assist with your transfer to Lake Garda.

Take time to unpack and freshen up before joining the group at the hotel restaurant for a lovely welcome dinner.

Overnight: Du Lac et Du Parc Grand Resort

Day 3: Malcesine

Thursday, September 17, 2026 (B,L)

After breakfast embark on an extraordinary journey to the summit of Mount Baldo aboard a funicular. As you ascend the rugged mountainside, your cable car slowly rotates providing 360° panoramic views of shimmering Lake Garda below and the imposing peaks of the Dolomites at the horizon. At the top join a guide for a leisurely walk followed by a picnic lunch. Then return to Malcesine either by cable car or by hiking down the mountain path.

Enjoy time to explore Malcesine independently before returning to the hotel for a private panoramic cruise on Lake Garda.

Overnight: Du Lac et Du Parc Grand Resort

Day 4: Trento

Friday, September 18, 2026 (B,L)

Meet with a local guide for a panoramic walking tour of Trento's historic center, passing by notable landmarks including Piazza del Duomo, the Fountain of Neptune, Palazzo Pretorio and the Cathedral of San Vigilio.

Next visit a local winery that produces the acclaimed Trento DOC sparkling wine. Tour the winery before gathering for a wine tasting lunch.

The evening is at leisure to take advantage of the plentiful amenities and dining options at the hotel.

Overnight: Du Lac et Du Parc Grand Resort

Day 5: Tirano | Bernina Pass | Engadin Valley

Saturday, September 19, 2026 (B,D)

After breakfast take a private transfer to the colorful village of Tirano for independent exploration and lunch on your own. Stroll down the cobblestone streets to discover quaint piazzas, local artisan shops and traditional cafés offering regional specialties.

Tirano is also our gateway to the majestic Alps and the starting point for the exciting rail journey ahead.

In the early afternoon board the legendary *Bernina Express*—the highest mountain railway in the Alps and a UNESCO World Heritage Experience. This iconic red train features panoramic carriages with expansive windows that stretch across the ceiling providing uninterrupted views of the passing Alpine landscapes. Wind through serene villages and lush vineyards before ascending to the dramatic heights of the Bernina Pass at 7,578 feet above sea level. The extraordinary beauty of Morteratsch Glacier comes into view as the train navigates into the pristine Engadin Valley.

Disembark the train and continue to the hotel to unpack and settle in. Later gather with fellow travel companions for dinner at the hotel restaurant.

Overnight: Hotel Walther Pontresina

Day 6: Muottas Muragl

Sunday, September 20, 2026 (B,L)

This morning's adventure includes a scenic cable car ride to the Muottas Muragl peak—a thrilling ascent to one of the most breathtaking vantage points in the Engadin Valley. The historic funicular, featuring meticulously maintained wooden carriages and large windows, dates back to 1907. A true example of Swiss ingenuity, the cable car climbs the steep slope with an impressive gradient of up to 56%.

Next journey to a local dairy farm to experience the generations-old Alpine traditions of cheese-making. Tour the property before sitting for a delicious tasting and lunch.

The remainder of the day is at leisure in Pontresina.

Overnight: Hotel Walther Pontresina

Day 7: Zermatt

Monday, September 21, 2026 (B,L,D)

Continue your rail adventure aboard the *Glacier Express* destined for Zermatt. Known as the "slowest express train," the *Glacier Express* offers a well-paced ride allowing you to fully appreciate the remarkable scenery amidst the comforts of its

sleek, modern carriages.

Begin the ascent through alpine meadows and dense pine forests climbing toward the Oberalp Pass, the highest point of the journey at 6,670 feet. Here the views transform into a snow-draped wonderland of rugged peaks and icy lakes. Then descend into the Rhine Gorge, often referred to as the "Swiss Grand Canyon." Continuing westward, the train crosses 291 bridges and passes through 91 tunnels, seamlessly connecting the remote mountain valleys and high-altitude plateaus. One of the highlights is the crossing of the iconic Landwasser Viaduct, where the train glides over a stunning curve into a rock-hewn tunnel.

Throughout the journey, be treated to impeccable onboard service including a gourmet lunch served at your seat.

Approaching Zermatt, the landscape shifts once again to reveal the Matterhorn's awe-inspiring silhouette. This final stretch is a crescendo of alpine beauty, setting the stage for the adventures to come exploring Zermatt's pedestrian-only village and the surrounding areas.

Upon arrival transfer to the hotel for check-in and dinner at the restaurant.

Overnight: Chalet Hotel Schönegg

Day 8: Zmutt Valley

Tuesday, September 22, 2026 (B,L)

After breakfast meet a local guide for a walking tour through Zermatt. Next join a local mountaineering Swiss guide aboard a gondola to ascend to Klein Matterhorn's summit—known as Matterhorn Glacier Paradise—more than 12,000 feet above sea level. From the summit, step into the enchanting Glacier Palace, a hidden world carved deep within the glacier's icy heart. Walk through illuminated tunnels with thick, crystal-clear glacial walls that sparkle in the light. Inside, intricately carved ice sculptures of mythical creatures and elegant designs create a magical atmosphere.

Ride the gondola down to Furi for lunch with spectacular views over the Zmutt Glacier Valley.

In the afternoon return to Zermatt by gondola or choose to take a tranquil hike down to the village.

Overnight: Chalet Hotel Schönegg

Day 9: Gorner Glacier

Wednesday, September 23, 2026 (B,D)

This morning meet with a mountaineering guide before boarding the Gornergrat Bahn cogwheel railway, the highest train in Europe. Ascend far above Zermatt to experience one of the best viewpoints in the Alps. Admire gorgeous vistas that includes Monte Rosa, the Matterhorn and the Gorner Glacier. Then set off on a hiking excursion offering jaw-dropping views of the Matterhorn. Concluding the hike, stop for lunch on your own at a mountain hut, then return to Zermatt by train.

Enjoy the remainder of the afternoon at leisure for independent exploration. This evening gather with fellow travel companions one last time to delight in a traditional fondue farewell dinner.

Overnight: Chalet Hotel Schönegg

Day 10: Zermatt | Zurich | Depart for U.S.

Thursday, September 24, 2026 (B)

After breakfast guests departing during the suggested times will take a short train ride to Täsch and then connect with a private transfer to Zurich Airport for flights home.

(Itinerary subject to change.)

Activity Level: 3

Moderate

Tour days tend to be long, flow at a consistent pace and may include long periods of travel. Guests should be prepared to walk longer distances, climb stairs and tolerate periods of standing, for example on city walks, sightseeing stops or excursions, on sometimes uneven surfaces including cobblestones or unpaved pathways and trails. Some destinations may have variations in

altitude and/or temperature. Daily pace and timing may vary significantly between longer and shorter travel days, with additional activities possibly occurring in the early morning or evening. Guests are expected to board transportation without assistance. Elevators are not always available at accommodations or sites visited.

Your Guide(s)

Orbridge Travel Director

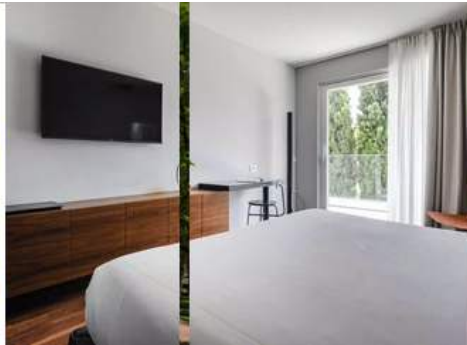


Every departure is accompanied by one of our premier Travel Directors, all of whom have extensive knowledge and experience as guides.

Enriched by their accompaniment and enthusiasm, enjoy the cultures and locations you explore with added confidence, understanding, and appreciation.

Accommodations

Du Lac et Du Parc Grand Resort



September 16 - September 18

This luxurious haven nestled on the shores of Lake Garda is an idyllic retreat for relaxation and rejuvenation after fulfilling days exploring Northern Italy. Surrounded by lush gardens and stunning alpine views, the property effortlessly blends natural beauty with sophisticated comfort. During leisure time take advantage of the indoor or outdoor pool, unwind by the tranquil lake, and experience exquisite dining options featuring regional and international cuisine.

Room Amenities: Individual climate control, writing desk and chair, complimentary Wi-Fi, flat-screen TV, phone, minibar, safe, bathrobes and slippers, and en suite bathroom with sundries and hair dryer.

Hotel Walther Pontresina



September 19 - September 20

This iconic, family-run hotel in the heart of the Engadine Valley offers a harmonious blend of Alpine charm and modern elegance. With its grand Belle Époque architecture and warm hospitality, this Relais & Châteaux property provides luxurious accommodations and exceptional dining that highlights local Swiss flavors. Surrounded by breathtaking mountain scenery, it's the perfect home base while exploring the area.

Room Amenities: Individual climate control, complimentary Wi-Fi, flat-screen TV, minibar, safe, bathrobes, and en suite bathroom with sundries and hair dryer.

Chalet Hotel Schöneegg



September 21 - September 23

Experience authentic Alpine hospitality at this Relais & Châteaux property with a history dating back to 1947. Once a simple tea room, the structure was lovingly expanded over the years to create the luxury hotel and chalet seen today. Thoughtful modifications combined traditional Swiss charm with the comfort and elegance that continue to define the hotel's character guests enjoy today.

Room Amenities: Individual climate control, private balcony with Matterhorn views, complimentary Wi-Fi, TV, phone, coffee and tea maker, minibar, and en suite bathroom with sundries and hair dryer.

(Accommodations subject to change.)

Optional Pre-Tour

PROSECCO



Nestled in the northeastern part of Italy, Prosecco is a picturesque region renowned for its rolling hills, charming villages and, of course, its world-famous sparkling wine. Located in the Veneto region, just north of Venice, Prosecco offers a delightful blend of natural beauty, cultural richness and gastronomic excellence.

Itinerary

B = Breakfast, L = Lunch, D = Dinner

Day +1: En Route from U.S.

Sunday, September 13, 2026

Day +2: Arrive in Verona, Italy | Prosecco

Monday, September 14, 2026 (D)

Begin your Italian escapade with a visit to Villa Valmarana ai Nani in Vicenza. This splendid property is renowned for its exquisite frescoes by the famous 18th-century painter Giambattista Tiepolo and his son, Giandomenico Tiepolo. The villa is surrounded by lush gardens offering stunning views of the surrounding countryside. The gardens are designed in a classical Italian style featuring manicured lawns, geometric flower beds and statues. The highlight of the garden is a series of 17 stone dwarf statues ("nani" in Italian) that give the villa its name. According to local legend, these statues represent the dwarf servants of a noble family and add a whimsical touch to the garden's elegance.

Next gather with a trained chef for a lively, hands-on cooking class.

Later check into your hotel and enjoy some time at leisure before gathering for dinner.

Overnight: Palazzo Scamozzi

Day +3: Prosecco

Tuesday, September 15, 2026 (B,L,D)

Prosecco is synonymous with its sparkling wine, and a visit to the region wouldn't be complete without touring its stellar vineyards.

After breakfast set out for tours and tastings at two unique wineries. Learn about the cultivation of Glera grapes, the traditional and modern methods of winemaking and the unique characteristics that make Prosecco so special. Guided tasting sessions provide the opportunity to savor different Prosecco varietals.

There will be time to explore independently before dinner this evening.

Overnight: Palazzo Scamozzi

Day +4: Prosecco | Lake Garda | Main Program Begins

Wednesday, September 16, 2026 (B)

After breakfast depart for Lake Garda to join guests arriving for the main program.
Pre-tour space is limited. We recommend reserving early for best availability.

This pre-tour is not escorted by an Orbridge Travel Director. Included sightseeing is accompanied by a local guide.
(Itinerary subject to change.)

Activity Level: 3

Moderate

Tour days tend to be long, flow at a consistent pace and may include long periods of travel. Guests should be prepared to walk longer distances, climb stairs and tolerate periods of standing, for example on city walks, sightseeing stops or excursions, on sometimes uneven surfaces including cobblestones or unpaved pathways and trails. Some destinations may have variations in altitude and/or temperature. Daily pace and timing may vary significantly between longer and shorter travel days, with additional activities possibly occurring in the early morning or evening. Guests are expected to board transportation without assistance. Elevators are not always available at accommodations or sites visited.

Accommodations

Palazzo Scamozzi



September 14 - September 15

Discover harmony amidst ancient charm and modern design at this elegant property situated on Corso Palladio within Vicenza's historic city center. Built in 1780 by architect Ottavio Bertotti Scamozzi, the hotel is located in prestigious Palace Braghetta Pagello.

Room Amenities: Individual climate control, flat-screen TV, minibar, safe, and en suite bathroom with sundries and hair dryer.

(Accommodations subject to change.)

What's Included

- 2 nights hotel accommodations
- 2 breakfasts, 1 lunch and 2 dinners
- 2 vineyard tours and tastings
- Transportation for included tours
- Luggage portage
- Gratuities to local guide, drivers, porters and wait staff for included meals

- Airport transfers for guests arriving during the suggested times

Optional Post-Tour

MONT BLANC



Journey through Italy's Aosta Valley—a region steeped in history and culture—for an authentic alpine experience. Discover well-preserved historical sites and Roman ruins before ascending to Pointe Helbronner by cable car for spectacular views of the Mont Blanc massif.

Itinerary

B = Breakfast, L = Lunch

Day 10: Aosta

Thursday, September 24, 2026 (L)

Depart for Aosta, capital of the small region called Valle d'Aosta (Aosta Valley). Founded by the Romans in 25 B.C., the town of Aosta features well-preserved historical sites including the Arch of Augustus, the Porta Praetoria and the Roman Theatre.

Enjoy a decadent fondue-based lunch before joining a local guide for a comprehensive walking tour. Descend into the Criptoporticus—a semi-subterranean gallery consisting of two parallel tunnels connected by a series of cross-vaulted passages. Its overall layout forms a rectangular shape that mirrors the outline of the Roman forum it once supported.

Continue to your hotel to check in and enjoy the remainder of the evening at leisure.

Overnight: Duca D'Aosta

Day 11: Aosta | Mont Blanc | Aosta

Friday, September 25, 2026 (B,L)

After breakfast set off on a scenic drive to Courmayeur situated at the base of Mont Blanc. Board the Skyway Cable Car for a breathtaking, nearly 11,000-foot ascent to Pointe Helbronner. Throughout the ride, the cable car rotates providing 360° panoramic views over the diverse terrain.

At the top a spacious terrace and multiple viewing platforms offer spectacular, unobstructed views of the Mont Blanc massif including iconic peaks Dent du Géant and the Grandes Jorasses. Hear stories of those who conquered the highest European peak plus other fascinating anecdotes related to this epic mountain.

After lunch at Kartell Bistrot Panoramic board the cable car for the returning descent to Courmayeur.

The remainder of the day is open for independent exploration.

Overnight: Duca D'Aosta

Day 12: Aosta | Milan | Depart for U.S.

Saturday, September 26, 2026 (B)

After breakfast guests departing during the suggested times take the complimentary group transfer to the airport for flights home. Post-tour space is limited. We recommend reserving early for best availability.

This post-tour is not escorted by an Orbridge Travel Director. Included sightseeing is accompanied by a local guide.

(Itinerary subject to change.)

Activity Level: 3

Moderate

Tour days tend to be long, flow at a consistent pace and may include long periods of travel. Guests should be prepared to walk longer distances, climb stairs and tolerate periods of standing, for example on city walks, sightseeing stops or excursions, on sometimes uneven surfaces including cobblestones or unpaved pathways and trails. Some destinations may have variations in altitude and/or temperature. Daily pace and timing may vary significantly between longer and shorter travel days, with additional activities possibly occurring in the early morning or evening. Guests are expected to board transportation without assistance. Elevators are not always available at accommodations or sites visited.

- Guests will experience varying altitudes with the maximum elevation of 11,371 feet at Pointe Helbronner.

Accommodations

Duca D'Aosta



September 24 - September 25

This historic property has been completely renovated—its new style serves as a tribute to the great Italian designers of the 1950s. Guest rooms feature retro architecture and décor, boasting French oak flooring, handcrafted Italian solid oak furniture, and fine English and American wallpaper.

Room Amenities: Individual climate control, terrace, living area, LED TV, complimentary Wi-Fi, phone, minibar, coffee and tea maker, safe, and en suite bathroom with sundries and hair dryer.

(Accommodations subject to change.)

What's Included

- 2 nights hotel accommodations
- 2 breakfasts and 2 lunches
- Guided panoramic walking tour of Aosta
- Cable car ride including admission

- Transportation for included tours
- Luggage portage
- Gratuities to local guide, drivers, porters and wait staff for included meals
- Airport transfer for guests departing during the suggested times

Terms and Conditions

THE FOLLOWING TERMS AND CONDITIONS ARE EFFECTIVE AS OF FEBRUARY 28, 2025.

Note: Travel credits and transfers are subject to the Terms and Conditions agreed upon at the time of the original reservation.

ORBRIDGE® TERMS AND CONDITIONS, RELEASE AND BINDING ARBITRATION AGREEMENT

For **Orbridge Private Jet Tours** Terms and Conditions, [click here](#).

This Agreement includes contractual terms and conditions and releases Orbridge, LLC from liability. Any payment to Orbridge, including but not limited to deposits or full payments, constitutes your acknowledgement of, and agreement to, this Terms and Conditions, Release and Binding Arbitration Agreement Orbridge set forth below and in subsequent tour documents.

Limitation of Responsibility. Orbridge LLC, its shareholders, directors, officers, employees and affiliates (collectively, "Orbridge"), does not own or operate any entity that provides goods or services for your trip including, for example, ownership or control over hotels or other lodging facilities, airline, vessel, bus, van or other transportation companies, local ground operators, providers or organizers of optional excursions or equipment used thereon, food service or entertainment providers, etc., even if they use the "Orbridge LLC" or "Orbridge" name. All such persons and entities are independent contractors. As a result, Orbridge is not liable for any negligent or willful act or failure to act of any such person or entity, or of any other third party. Without limitation, Orbridge is not responsible for any injury, loss, or damage to person or property, death, delay or inconvenience (collectively, "losses") in connection with the provision of any goods or services occasioned by or resulting from, but not limited to, acts of God, acts of government, force majeure, acts of war or civil unrest, insurrection or revolt, strikes or other labor activities, criminal or terrorist activities of any kind, or the threat thereof, overbooking or downgrading of accommodations, structural or other defective conditions in hotels or other lodging or vessel facilities, mechanical or other failure of airplanes or other means of transportation or for any failure of any transportation mechanism to arrive or depart timely or safely, dangers associated with or bites from animals, pests or insects, marine life or vegetation of any sort, dangers incident to recreational activities such as scuba diving, snorkeling, paddle boarding, surfing, swimming, kayaking, sailing, canoeing, rafting, hiking, bicycling, rock climbing, etc., sanitation problems, food poisoning, lack of access to or quality of medical care, difficulty in evacuation in case of a medical or other emergency, illness, epidemics, pandemics or the threat thereof or for any other cause beyond the direct control of Orbridge. In addition, I release Orbridge from its own negligence and assume all risk thereof.

Rates. Program rates are based on minimum participation levels, current fares and costs (air, water, land, rail), tariffs and currency values. While Orbridge does everything possible to maintain the listed program rates, they are subject to change effective immediately upon posting unless otherwise specified by Orbridge. In the case of invoicing errors, we reserve the right to re-invoice with the correct pricing.

Reservations, Deposits and Final Payment. To secure your reservation, deposits are due upon placing a reservation as follows: (1) \$850 per person per program and \$500 per person per pre-tour and/or post-tour except for programs noted in (2) and (3); (2) \$2,500 per person for Antarctica Discovery, African Expedition by Private Train and 2026 Iceland and the Cosmos: A Total Solar Eclipse at Sea and \$500 per person per pre-tour and/or post-tour; (3) a non-refundable \$750 per person is due for Tanzania Wildlife Safari's Rwanda pre-tour. Orbridge accepts payment by check, automated clearing house ("ACH"), wire transfer or major credit card.

Final payment, including any pre-tour and/or post-tour, optional excursion(s) fees and optional electives, is due for: (1) all programs except Antarctica Discovery, African Expedition by Private Train and all 2026 Total Solar Eclipse Tours—no later than 90 days prior to the program's scheduled departure date; (2) Antarctica Discovery, African Expedition by Private Train and all 2026 Total Solar Eclipse Tours—no later than 195 days prior to the program's scheduled departure date.

If your reservation is made between the final payment due date and the program's scheduled departure date, the full cost of the program, plus any pre-tour and/or post-tour, optional excursion(s) fees and optional electives, is due at the time of registration.

If final payment is not received by Orbridge by the final payment due date, Orbridge may, at any time and with or without notice, cancel your reservation in its sole discretion with no right of refund.

Reservation Grace Period. Reservations made no sooner than 120 days prior to all programs' scheduled departure date, except Antarctica Discovery, African Expedition by Private Train and all 2026 Total Solar Eclipse Tours, and no sooner than 225 days prior to Antarctica Discovery's, African Expedition by Private Train's and all 2026 Total Solar Eclipse Tours' departure date may be cancelled within 30 days following the reservation date ("Grace Period") for a full refund.

All payments made for Tanzania Wildlife Safari's Rwanda pre-tour are non-transferrable and non-refundable.

Notice of termination must be received by Orbridge during the Grace Period and provided in writing either via email or mailed letter. The date of receipt will be used for the effective date.

Reservation Changes. Reservation changes (including, but not limited to, name changes) are subject to availability and cannot be guaranteed. Reservation changes will not incur an administration fee except in the following cases: 1) Reservation changes completed 90 or fewer days from the program's scheduled departure date for all programs except Antarctica Discovery, African Expedition by Private Train and all 2026 Total Solar Eclipse Tours will incur a \$150 administrative fee plus any third-party penalties and/or charges. 2) Reservation changes completed 195 or fewer days from the program's scheduled departure date for Antarctica Discovery, African Expedition by Private Train and all 2026 Total Solar Eclipse Tours will incur a \$150 administrative fee plus any third-party penalties and/or charges. In addition, any reservation changed from double occupancy to single occupancy will be charged the single occupancy rate, which will be due at the time of final payment or upon receipt of an updated invoice if received after the tour's final payment due date.

Reservation Cancellation and Refunds. Notice of cancellation must be submitted to Orbridge in writing either via email or mailed letter. The date of receipt will be used for the effective date and the cancellation will be processed as follows:

(a) For all programs except those noted in (b) and (c), if the cancellation notice is received by Orbridge more than 90 days prior to the program's scheduled departure date, all monies paid to Orbridge for the main program and for any pre-tour and/or post-tour will be refunded less an administrative fee of \$350 per person for the main program and \$200 per person for a pre-tour and/or post-tour. If the cancellation notice is received by Orbridge between 90 and 76 days prior to the scheduled departure date, a 25% cancellation fee will be applied to the full cost of the program, including any pre-tour and/or post-tour, optional excursion(s) fees and optional electives, and the balance will be refunded. If the cancellation notice is received by Orbridge between 75 and 61 days prior to the scheduled departure date, a 50% cancellation fee will be applied to the full cost of the program, including any pre-tour and/or post-tour, optional excursion(s) fees and optional electives, and the balance will be refunded. If the cancellation notice is received by Orbridge between 60 and 46 days prior to the scheduled departure date, a 75% cancellation fee will be applied to the full cost of the program, including any pre-tour and/or post-tour, optional excursion(s) fees and optional electives, and the balance will be refunded. If the cancellation notice is received by Orbridge within 45 days prior to the scheduled departure date, a 100% cancellation fee will be applied to the full cost of the program, including any pre-tour and/or post-tour, optional excursion(s) fees and optional electives.

(b) For Antarctica Discovery, African Expedition by Private Train and 2026 Iceland and the Cosmos: A Total Solar Eclipse at Sea, if the cancellation notice is received by Orbridge more than 195 days prior to the scheduled departure date, all monies paid to Orbridge for the main program and for any pre-tour and/or post-tour will be refunded less an administrative fee of \$950 per person for the main program and \$200 per person for a pre-tour and/or post-tour. For Castile and the Cosmos: Total Solar Eclipse in the Heart of Spain and Catalonia and the Cosmos: Total Solar Eclipse on the Spanish Coast, if the cancellation notice is received by Orbridge more than 195 days prior to the scheduled departure date, all monies paid to Orbridge for the main program and for any pre-tour and/or post-tour will be refunded less an administrative fee of \$350 per person for the main program and \$200 per person for a pre-tour and/or post-tour. If the cancellation notice for Antarctica Discovery, African Expedition by Private Train and all 2026 Total Solar Eclipse Tours is received by Orbridge between 195 and 150 days prior to the scheduled departure date, a 25% cancellation fee will be applied to the full cost of the program, including any pre-tour and/or post-tour, optional excursion(s) fees and optional electives, and the balance will be refunded. If the cancellation notice is received by Orbridge between 149 and 120 days prior to the scheduled departure date, a 50% cancellation fee will be applied to the full cost of the program, including any pre-tour and/or post-tour, optional excursion(s) fees and optional electives, and the balance will be refunded. If the cancellation notice is received by Orbridge within 119 days prior to the scheduled departure date, a 100% cancellation fee will be applied to the full cost of the program, including any pre-tour and/or post-tour, optional excursion(s) fees and optional electives.

(c) All payments made for Tanzania Wildlife Safari's Rwanda pre-tour are non-refundable.

A 100% cancellation fee applies to all non-refundable airfare. Refunds, if any, will be processed within 30 days of our receipt of your written notice.

Travel Insurance. Orbridge strongly recommends that you purchase travel and cancellation insurance to protect your investment in the event of unexpected or unforeseen circumstances. In addition, we recommend that you consider obtaining a policy(ies) that will cover emergency medical evacuation insurance and cancel for any reason insurance. Travel and cancellation insurance policies and dates by which policies must be purchased vary by provider/insurer, maximum coverage (including cancel for any reason) is generally only available for purchase within 14 days of your reservation being confirmed. It is advised to determine your insurance needs and make necessary arrangements soon after reserving on tour. If you do not have, but are interested in purchasing, travel and cancellation insurance please contact us.

Program Cancellations or Postponements. All programs are subject to cancellation or postponement by Orbridge prior to the scheduled departure date for reasons such as, but not limited to, insufficient participation, or logistical problems that, in Orbridge's sole judgment, may impede program operations or represent conditions or events that may expose program guests and/or Orbridge to undue risk of harm, injury, damage or inconvenience. In the event of program cancellation or postponement by Orbridge, Orbridge may offer you alternative arrangements such as the option to join the same tour on a different date or a different tour. If the price of your alternative booking is lower than your original booking price, Orbridge will refund the difference within 30 days of the alternative program's departure date. If it is higher than your original booking price, Orbridge will invoice you the difference and you will be responsible therefor. Transferred guests are subject to the terms of the original tour. Except for force majeure, if a program is cancelled or postponed by Orbridge, Orbridge will refund all payments made within 30 days of notice of program cancellation or postponement if an alternative arrangement is not offered.

Itineraries. Accommodations, the itinerary, travel directors or expedition leaders, lecturers, hosts, faculty or organization representative, and arranged excursions are subject to change or substitution at any time due to unforeseen circumstances or circumstances beyond Orbridge's control. Reasonable efforts will be made to operate programs as planned, however adjustments, substitutions and changes may occur after the final itinerary has been issued. Orbridge may, in its sole discretion, withdraw a program or any part of it, make such alterations or substitutions to the itinerary or program inclusions as it deems necessary or desirable, and pass on to program participants any expenditures or additional costs caused by any such adjustments, or by delays or events beyond its reasonable control.

Not Included. Unless otherwise specifically noted in the itinerary, program prices do not include the following expenses, which if applicable are your sole responsibility to pay and satisfy: trip cancellation insurance and passenger travel protection plan; domestic, international, and internal airfares except as indicated in program inclusions; transfers and luggage handling fees except in connection with scheduled group flights; costs associated with obtaining passports or entry visas; airport departure taxes; airline ticketing fees; airport transfers when arriving/departing on other than scheduled group dates; excess baggage charges; any new value added taxes or other taxes added to program costs by applicable governmental authorities; gratuities to drivers, guides, or ship's crew not specified; meals and beverages other than those specified as being included in the itinerary; sightseeing not included in the itinerary; personal expenses such as laundry, communication charges and optional activities (which are subject to availability); ship, air, or transportation fuel surcharges, if applicable; any items not on the "included" list of the tour documents.

Health and Fitness to Travel. Through your participation in your tour, you assume responsibility for your own health, safety, and welfare and acknowledge that Orbridge cannot absolutely guarantee your safety or health. Your physician can provide guidance on your personal health risk and precautions to take while traveling. Some programs include physically active elements. To enjoy these programs as intended, a minimum level of fitness is required and Orbridge will require all guests to follow local, state, national and/or World Health Organization health and safety mandates. Accordingly, you must be in good physical and mental condition to participate. You represent that you have no physical, mental or other condition, impairment or disability that may or will cause or create a risk of injury or other hazard to yourself or others in respect to any aspect of the program you have selected. Orbridge may, in its sole discretion, limit, restrict or prohibit from participation in any aspect of any program any individual that it considers in its sole discretion to be impaired or unsuitable due to fitness level. In addition, Orbridge may, in its sole discretion and at the participant's sole expense, remove the guest from the program, or restrict the program-related activities of any individual whose physical or mental condition may or is likely to cause a hazard to himself/herself or others, or otherwise impair the enjoyment of other program participants. Any physical condition requiring special attention, diet, or treatment must be reported in writing to Orbridge at the time a program reservation is made. Should you have any questions or need any clarification about a specific program, please ask for details at the time of registration. Orbridge will try to accommodate your situation if possible.

Accessibility. Orbridge cannot guarantee that the transportation, lodging, and entertainment/sightseeing accommodations will be accessible to all persons regardless of their physical and mental condition. In addition, many of the activities involved in each program include walking or the like for some distance on uneven ground or pavement or moving water as well as the ability to walk up and down stairs without assistance. Should any individuals seeking to participate in a travel opportunity need special accommodations to ensure their enjoyment of the trip, kindly provide notice at the time the reservation is submitted, and we will see if your participation is feasible. Please understand that the Americans with Disabilities Act is inapplicable outside the United States.

At the time of reservation, Orbridge needs to be notified to determine if the special needs of an individual traveler can be met through special arrangements. It is possible that minor modifications to the services can be provided, but only if Orbridge is made specifically aware of anticipated needs. This notification should be made in writing no less than two weeks prior to the planned travel. Neither Orbridge nor any of the providers of transportation, lodging, or other services can provide special accommodations without this advance notice.

Where an individual with certain specific needs will be traveling with a group, it is necessary for other members of that person's group to be available to assist as necessary. Neither employees of Orbridge nor any suppliers of services can allow any of their employees to provide physical assistance to any guests.

Travel Advisories. The State Department and the Centers for Disease Control periodically issue statements and advisories about risks to travelers. These statements are country specific and contain important information. The State Department information can be found at www.travel.state.gov, and the CDC statements can be found at www.cdc.gov. Orbridge highly recommends everyone to review these sites.

Children. Orbridge welcomes the participation of children in most of its programs. However, in the event you do include your children or other minors for whom you serve as legal guardian ("Dependents") in your travel plans, you hereby agree that you are and shall be at all times solely responsible for their care, actions, safety and protection during the program and any pre-tour and/or post-tour. Should you have any questions whether a particular program or inclusion is possible or suitable for your Dependent(s), please contact us.

Baggage. Program rates include the price of one piece of policy-compliant baggage per person during the land, cruise or rail portion of the program only unless specified in the itinerary. Air carriers and motor coaches often impose significant other restrictions or limitations on the number of pieces, size and weight of luggage and may reject or impose additional fees on luggage exceeding such limitations or restrictions. All such fees are your sole cost and responsibility. In addition and regardless of location or transportation method, your baggage and personal effects are and shall at all times be at your sole risk throughout the entire program. Please check with your air carrier for other applicable baggage restrictions and limitations.

Travel Documents. All guests are responsible for possessing and maintaining necessary travel documents. These documents shall be valid under state and federal law and as required by foreign countries being visited. Orbridge is not responsible for invalid travel documents and repercussions thereof.

For U.S. citizens, valid passports are required for travel to foreign destinations and some countries require specific visas prior to entry. Please direct any questions in respect to visa requirements to Orbridge, which shall use commercially reasonable efforts to provide answers as a courtesy, provided that it shall remain your sole responsibility and obligation to obtain and verify that you have all required travel documents, including visas, necessary and appropriate for the program location(s) and sufficient blank pages in your passport for visas and immigration stamps. In addition, some countries require your passport to have an expiry date of not less than six months after your anticipated return to the United States. Orbridge disclaims all liability for any expenses or costs you may incur due to your prohibition or restriction from entering a country on the program itinerary or reentering the United States at the conclusion of the program. If travel documents fail to meet these requirements, boarding of aircraft or ship to any international destination may be denied and entry into such countries may be denied.

Photos and Videos. Orbridge may take photographs and/or video of its trips and participant grants Orbridge permission to do so and for it to use such for promotional or commercial use without payment of any compensation to participant. In addition, Orbridge may use, without compensation, any photographs or video taken by tour participants and submitted to Orbridge or to SmugMug without payment of any compensation. In submitting any such photographs or videos to Orbridge or SmugMug, participant warrants that he or she took the image and that the dissemination of same does not violate the copyright rights of any person.

Data Rights, Permissions. Data collected and/or derived by Orbridge resulting from your use of the Website is the sole and exclusive property of Orbridge and may be used in any manner consistent with its Privacy Policy located on Orbridge's website. By submitting to Orbridge a digital or hard copy form that includes your personal contact information, including without limitation, your email address and telephone number(s), you give Orbridge and any other entity identified on the form permission to use that information to contact you and as otherwise may be described on the form and/or in the Privacy Policy.

Other. Dates, program details and costs are based on tariffs, exchange rates and other information current at the time of printing, but are subject to change at any time. While we do not anticipate material revisions of the itinerary or its included features, we do reserve the right to substitute accommodations or modes of transportation and to make any changes in the itinerary Orbridge, in its sole discretion, deems necessary and in that case any additional expense or cost will be paid by the individual guest. Your baggage and personal effects are your sole responsibility at all times. It is prohibited by federal law and Orbridge policy to bring illegal drugs, firearms, or other contraband (including marijuana for medical or recreational purposes) on any program.

Orbridge may at any time and without notice modify these terms and conditions, and any modification so made will be effective for all reservations made from and after the posted Effective Date.

In the event any term in these terms and conditions is deemed unenforceable the unenforceable clause shall be interpreted to give effect to the parties' intentions to the greatest enforceable extent, and all other provisions hereof shall remain fully enforceable according to their terms.

Individual Supplier Contracts. Individual contracts/terms from Orbridge's contracted suppliers govern the relationship between that supplier and the Orbridge guest. These respective contracts/terms often establish limits on liability, limits on claims, define the time to file claims, the acceptable jurisdictions for making claims, etc. They should be reviewed with care.

Click any of the following for links to:

[Alaskan Dream Cruises](#) (Discover Southeast Alaska)

[Albatros Expeditions](#) (Antarctica Discovery)

[Amadeus River Cruises](#) (Flavors of Provence River Cruise, Cruise the Danube By Luxury River Ship)

[Lazy Bear Lodge](#) (Polar Bears of Churchill, Polar Bears & Beluga Whales)

[Metropolitan Touring](#) (The Galapagos Islands)

[Ponant](#) (Northern Adriatic: A Nautical Voyage, Cruise the Majestic Nordic Fjords, The Greek Isles by Luxury Sailing Yacht, Aegean Sea Odyssey: The Greek Isles & Historic Türkiye)

[Teton Science Schools](#) (Wolves & Wildlife of Yellowstone)

Registering for a tour and submission of payment to Orbridge acknowledges guests’ acceptance of the above contracts/terms for relevant suppliers. In addition, guests may be asked to sign an acknowledgement of these or other individual supplier’s terms upon arrival on tour as a condition of participation.

Binding Arbitration. I agree that any dispute concerning, relating, or referring to this contract, the brochure, or any other literature concerning my trip, or the trip itself shall be resolved exclusively by binding arbitration in Seattle, Washington, either according to the then existing commercial rules of the American Arbitration Association or pursuant to the Comprehensive Arbitration Rules & Procedures of the Judicial Arbitration and Mediation Services, Inc. (JAMS). Such proceedings will be governed by substantive (but not procedural) Washington law. The arbitrator and not any federal, state, or local court or agency shall have exclusive authority to resolve any dispute relating to the interpretation, applicability, enforceability, conscionability, or formation of this contract, including but not limited to any claim that all or any part of this contract is void or voidable. By agreeing to these terms and conditions, both parties are waiving their right to a trial by jury. Any arbitration commenced against Orbridge must be on behalf of only the individual(s) to this Agreement and his or her immediate family members traveling with them, such as a spouse or child. Under no circumstances can participant be part of a class or other joint action.

Acceptance of Contract. ANY PAYMENT TO ORBRIDGE, INCLUDING BUT NOT LIMITED TO DEPOSITS OR FULL PAYMENTS, CONSTITUTES YOUR ACKNOWLEDGEMENT OF AND AGREEMENT TO THESE TERMS AND CONDITIONS SET FORTH ABOVE AND IN MORE SPECIFIC TOUR DOCUMENTS.

©2025 ORBRIDGE LLC. All rights reserved.

ORBRIDGE, ORBRIDGE DESTINATION SPECIALISTS, ORBRIDGE GROUP, and OBR are service marks of Orbridge LLC. The service marks and trademarks of any supplier appearing in these materials are owned by each respective company.

WAST# 602828994; CAST# 2098750-40

(v. 022825)