



National Trust for Historic Preservation
National Trust Tours

JULY 26 - AUGUST 1, 2026



POLAR BEARS & BELUGA WHALES

Animals of the Arctic | Summer Expedition



Orbridge



National Trust for Historic Preservation

National Trust Tours

Dear National Trust Traveler,

Join us for a special opportunity to witness the diverse wildlife and pioneering spirit of the Canadian Arctic in summer.

During summer, visitors can spot polar bears along the local shores before they return to the pack ice when it forms in early winter. Summertime is also when the bears share the area with more than 60,000 beluga whales—who come to feed, mate and give birth in the shallow waters—as well as a wide variety of other wildlife.

This distinguished program features exclusive educational experiences and presentations by professional guides and local naturalists.

Please reserve today by calling (866) 639-0079 or online at nationaltrusttours.orbridge.com.

Sincerely,

Meg Annacone Poretz
Director
National Trust Tours

JULY 26 - AUGUST 1, 2026

RESERVE YOUR SPACE TODAY

Online: nationaltrusttours.orbridge.com • Phone: **(866) 639-0079**

Category Standard Rate Special Rate*

Double \$8,499 \$7,995

Single \$11,499 \$10,995

–rate includes round-trip airfare between
Winnipeg and Churchill–

Optional Excursions Rate Per Person

Kayaking Tour \$235

AquaGliding Tour \$195

DEPOSIT AMOUNT PER PERSON: \$850

*Special group rates; limited offer. All rates are per person in U.S. dollars based on double occupancy except where noted as Single. Single availability limited. Unless noted otherwise, airfare is not included. **An exclusive Early Booking Bonus, Expedition Libraries are curated collections of useful resources and background reading tailored to this program. Place your deposit on or before the specified date, and one Expedition Library per room will be sent after receipt of final payment. Libraries may be purchased; call for details. Full Terms & Conditions at terms.orbridge.com. Any payment to Orbridge, LLC constitutes your acceptance of the terms and conditions set out therein, including but not limited to the cancellation and refund terms.

CST#2098750-40 WST#602828994

Orbridge takes seriously the responsibility to minimize our global environmental impact. Each year we plant 100,000 trees in U.S. State Forests with afforestation needs as an ongoing initiative among our evolving sustainability efforts. Learn more at orbridge.com/going-green.



Polar Bears & Beluga Whales | Itinerary Highlights *(subject to change)*

Daily activities will be determined by weather, opportunities to view wildlife and other various elements that make up the diverse landscape. This itinerary is a general listing of activities and excursions that may happen during any part of the tour.

(B = Breakfast, L = Lunch, D = Dinner, R = Reception)

Day 1 **ARRIVE IN WINNIPEG, MANITOBA, CANADA** After arriving at Winnipeg Richardson International Airport, transfer to the hotel. This evening meet with fellow travel companions for a private reception and welcome dinner to kick off the exciting adventure ahead.
Overnight: Fort Garry Hotel & Spa (R,D)

Day 2 **WINNIPEG | FLIGHT TO CHURCHILL | CULTURAL AND HERITAGE TOUR** Check out of the hotel this morning followed by the group flight to Churchill. Transfer to Lazy Bear Lodge in time for lunch at the café. Afterward set off on a guided Cultural and Heritage Tour to visit the town's waterfront, Miss Piggy Plane Crash, Polar Bear "Jail" and Cape Merry. Return to the lodge to check in, unpack and familiarize yourself with the property.
Overnight: Lazy Bear Lodge (B,L,D)

Day 3 **CHURCHILL | BOAT TOUR | PRINCE OF WALES FORT | DOG MUSHING** Board Zodiac boats with your Orbridge Expedition Leader for a three-hour tour of the Churchill River/Hudson Bay area to learn more about the 60,000 beluga whales living here. Visit the Prince of Wales Fort, built to protect the business interests of the Hudson's Bay Company. After lunch at the lodge, enjoy time at leisure or join one of two optional excursions. This evening meet an energetic team of sled dogs and their handler for a dog mushing adventure.
Overnight: Lazy Bear Lodge (B,L,D)

Day 4 **CHURCHILL | HUDSON BAY COASTAL TOUR** Explore the Hudson Bay area during a full-day guided water excursion aboard a touring vessel custom designed for wildlife viewing. This shoreline of the Hudson Bay is a rich ecosystem of life, home to a diverse group of animals.
Overnight: Lazy Bear Lodge (B,L,D)

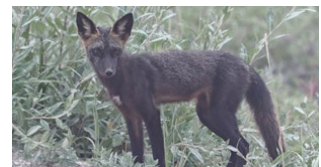
Day 5 **CHURCHILL | ARCTIC CRAWLER™ EXPERIENCE | ITSANITAQ MUSEUM** Board Lazy Bear's Arctic Crawler™ for a guided wildlife excursion. After lunch visit the Itsanitaq Museum dedicated to Inuit culture, and learn about the native people of northern Canada. While downtown enjoy leisure time to explore on your own.
Overnight: Lazy Bear Lodge (B,L,D)

Day 6 **CHURCHILL | FLIGHT TO WINNIPEG** Following breakfast visit the Churchill Northern Studies Centre for a tour and presentation led by a resident scientist. Have lunch, then transfer to the airport for the charter flight to Winnipeg. This evening gather for a farewell reception.
Overnight: The Grand Winnipeg Airport Hotel (B,L,R)

Day 7 **WINNIPEG | DEPART FOR U.S.** After breakfast make the short walk from the hotel to the airport for flights home. (B)



Enriched from the expertise provided by your Orbridge Expedition Leader, you'll bring home a deeper understanding of the flora, fauna, natural history and cultural narrative of the diverse Canadian Arctic.



Activity Level: Guests should be sure-footed on stairs, ramps, and small vessels and able to walk on uneven ground without assistance. Skiffs provide the mode for much of the exploration on this program and guests should be sure-footed to enter/exit the vessel.



What's Included

- 6 nights in ideally situated and comfortable accommodations
- Round-trip airfare between Winnipeg and Churchill
- 6 breakfasts, 5 lunches and 5 dinners (including a special welcome reception and dinner) plus a farewell reception
- Full guiding services of an Orbridge Expedition Leader and a local naturalist
- All excursion transportation and entry fees
- All gratuities

THE MATONABEE

The Matonabee is a 70-foot catamaran touring cruise vessel. It features comfortable seats, large windows, spacious viewing decks, and a fully serviced galley, complete with espresso machine. Don't miss the unique views from the Matonabee's 12 underwater windows. Enjoy the boat's ability to deploy rigid inflatable boats for exploration. Cruise along the coast of the Hudson Bay to places such as Seal River and Button Bay, a favorite gathering spot for polar bears.



THE ARCTIC CRAWLER™

Get up-close access to the wildlife of the tundra aboard this specially designed trekking vehicle. The Arctic Crawler™ features comfortable seating, on-board facilities with flush toilet, large windows that lower for better viewing, and a spacious, fully grated outside rear deck for optimal photography opportunities. With the expertise of the driver and your Orbridge Expedition Leader, you will witness all the stunning natural beauty and diverse wildlife the tundra has to offer.



Orbridge

Orbridge Standard of Excellence

Orbridge understands travel today can be complicated. From cabin or room selection to airport transfers, dietary requests, or pre- or post-tour details—we are dedicated to making your journey seamless and special from the moment you leave home.

Our curated destinations—featuring outstanding properties and ships, meticulously crafted itineraries, and knowledgeable guides, travel directors and expedition leaders—offer life-changing experiences you'll never forget.

Accommodations *(subject to change)*

FORT GARRY HOTEL & SPA

This landmark property in the heart of downtown Winnipeg features high-tech amenities and a mix of contemporary style and Old World elegance.



LAZY BEAR LODGE

This remarkable, handcrafted log lodge is a welcoming, rugged retreat that offers a deep connection to the pristine surroundings. Built with care from locally and sustainably sourced materials, the two-story lodge blends rustic authenticity with modern comfort. Its Douglas fir floors—reclaimed from a Canadian National Railway warehouse built in the early 1920s—and windows once part of a 19th-century Hudson Bay Trading Post lend each space a tangible link to northern heritage.



THE GRAND WINNIPEG AIRPORT HOTEL

Located next to the Winnipeg airport terminal, this boutique property provides beautifully appointed accommodations and thoughtful amenities.





National Trust for Historic Preservation
National Trust Tours

National Trust Tours
105 Loudoun Street SW
Unit 1
Leesburg, VA 20175

POLAR BEARS & BELUGA WHALES

JULY 26 - AUGUST 1, 2026

Special Rate:

Save more than **\$1,000** per couple

30-DAY REFUND GUARANTEE

FREE EXPEDITION LIBRARY
AN EXCLUSIVE EARLY
RESERVATION BONUS

Reserve by
January 23, 2026**

PRSRT STD
U.S. POSTAGE
PAID
PERMIT NO. 825
SAN DIEGO, CA

USI Travel Insurance Services offers a plan designed specifically for National Trust Tours travelers, providing coverage for Trip Cancellation, Trip Interruption, Emergency Medical and more. You can upgrade your plan with Cancel For Any Reason (CFAR) coverage and be reimbursed up to 75% of your pre-paid, non-refundable trip costs. Purchase travel insurance today: (800) 937-1387.

ELIGIBILITY

National Trust for Historic Preservation tours are open to members only. Membership dues for 2026 are \$30 for family and \$20 for individual membership.